

Respecting others

We respect all members of staff and researchers by:

- Listening to each other
- Working as a team and encouraging and supporting each other
- Valuing the opinions of others
- Being honest and fair
- Always being willing to learn

We are respectful, understanding and kind to each other.

Excellent service

We support world class science by:

- Always striving to be the best
- Providing a high quality professional service
- Developing highly trained staff with relevant expertise
- Constantly adapting, evolving and responding to feedback
- Improving and promoting new technologies
- Being reliable and consistent

We are professional, friendly, customer focused and valued members of the University.

"The strength of the team is each individual member. The strength of each member is the team."

Phil Jackson

Our department has significant responsibilities; to provide the best possible care for our animals, to support researchers who are undertaking world leading research and to ensure a positive working environment that will bring out the best in our dedicated and capable staff. The values contained in this document are the building blocks that we will use during a time of change to develop as a team that undertakes all of these responsibilities with increasing excellence. It is a challenging but exciting time for us and I am looking forward to seeing what will happen as we work together to be the best we can be. Watch this space!

Dr Lesley Penny

Thanks to all of the BVS staff who contributed to the new departmental values so far. If you have any questions or suggestions, please email

Lesley.Penny@ed.ac.uk

This document can be made available in alternative formats on request

More information on the use of animals in research at Edinburgh University

www.ed.ac.uk/research/animal-research

Printed by: Printing Service at the University of Edinburgh

The University of Edinburgh is a charitable body, registered in Scotland, with registration number SC005336



THE UNIVERSITY of EDINBURGH
Bioresearch & Veterinary Services

Bioresearch & Veterinary Services

Dedicated to providing an excellent professional service that prioritises animal welfare whilst supporting our world leading research.

Our new values

These values are based on the outputs of a departmental values workshop which involved staff from across all sites.

Having identified the values that matter to our staff and will impact our animals and the scientists that we work with, we will now begin to make them central to our everyday actions and behaviours.

We want to develop as a positive, world leading, values-driven department where animals are cared for, scientists are supported and all our staff are happy and motivated.

We value:



Caring for animals



Active communication



Respecting others



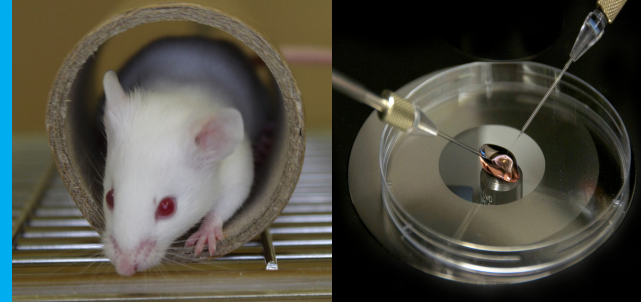
Excellent service

Caring for animals

We provide excellent animal care and welfare by:

- Having a caring attitude
- Complying with Home Office legislation
- Promoting refinement, replacement and reduction
- Engaging in ongoing learning and development
- Having confidence to speak out

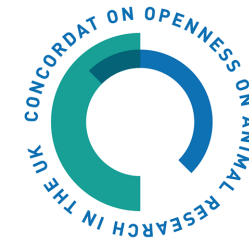
We are compassionate, compliant and committed to putting animal welfare first.



Replacement

Reduction

Refinement



Active communication

We communicate openly and actively by:

- Being open and transparent
- Building good relationships
- Responding to queries in a timely manner
- Involving all relevant people
- Having clear reporting structures

We are transparent and inclusive, valuing people through clear communication.

